

GFRC

There is nothing like the strength of Glass Fiber Reinforced Concrete (GFRC) to stand up to the harsh elements of the great outdoors. GFRC blends fiberglass and reinforced concrete, so it is lighter in weight than concrete and more durable than fiberglass.

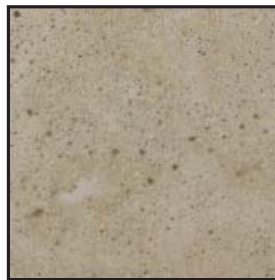


P/N	OD	Top ID	Bottom ID	IH	Wt. lbs.
G-AGN-24	27"	17 1/2"	10 1/2"	23"	150
G-AGN-30	36 1/2"	25 3/4"	13"	29 3/4"	280
G-AGN-36	46"	34"	14 1/2"	35 1/2"	410

P/N	Top OL	Top IW	Bottom IW	IH	Wt. lbs.
G-F-VN-18	18"	14 1/2"	13 1/2"	16 1/4"	105
G-F-VN-22	23 1/4"	19"	16 3/4"	22 1/4"	180
G-F-VN-30	30"	23 1/4"	22 1/2"	26 1/2"	275



Snow



Limestone



Wet Sand



Walnut



Clay



Granite

Color variations are inherent characteristics of all planters. Colors are represented as accurately as possible. Photographic procedures may alter the colors and images shown may vary slightly from the photo. For best results please call for a sample.